

**To learn more about the V-LAP  
system visit**

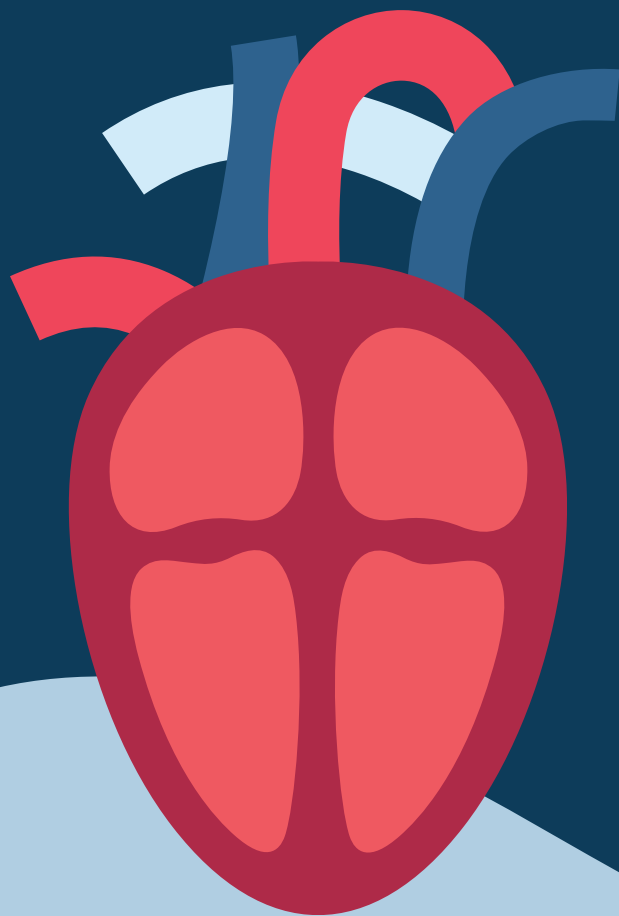
**[www.vectoriousmedtech.com](http://www.vectoriousmedtech.com)**



- \* The V-LAP is not yet commercially available
- \* Be sure to talk with your doctor so that you thoroughly understand all of the risks and benefits associated with the implantation of the V-LAP sensor.



**Advanced Management of Heart  
Failure with V-LAP™ System**



## What Is Heart Failure?

Your heart is a muscle that pumps blood throughout your body. Heart failure means that your heart cannot squeeze hard enough to move enough blood out of the heart's chambers and into the rest of your body, or that your heart muscle is too thick and does not relax enough between beats to allow it to fill with blood.

## The V-LAP Approach for Heart Failure Management

The V-LAP System offers a new approach for management and treatment of heart failure with a goal of reducing future hospitalizations and clinic visits. It is important you avoid unnecessary hospitalizations as each subsequent heart failure related admission, damages your heart and decreases its function.

### The V-LAP Benefits



#### Reduce Future Hospitalizations

By an early proactive treatment based on your heart data



#### Easy to Use

The V-LAP system allows daily monitoring of your heart by your physician while you are at the convenience of your home



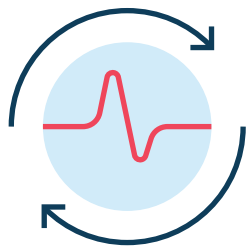
#### Low Risk Procedure

The V-LAP sensor is inserted via a standard, minimally invasive catheterization procedure which takes minutes to complete



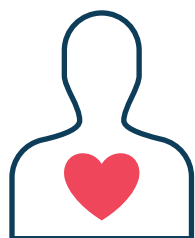
#### Last for Lifetime

The V-LAP sensor has no battery or leads and is designed to last for a lifetime.



# 24/7

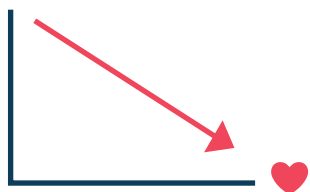
Remote monitoring  
of your heart



# 39%

Reduction in  
heart-failure hospital  
readmission

Source: Abraham WT, et al. Lancet.  
2011 Feb 19;377(9766):658-66



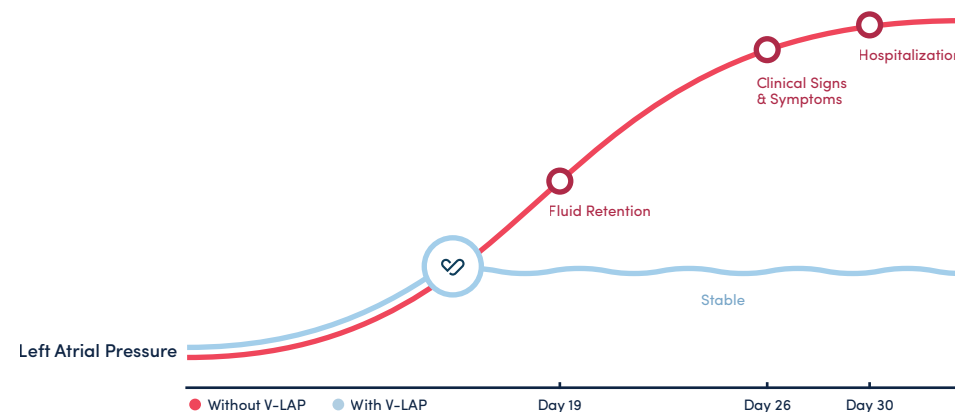
# 47%

Drop in rates of  
mortality

Source: Givertz MM, et al. J Am Coll  
Cardiol. 2017 Oct 10;70(15):1875-1886.

## Early Proactive Treatment that Reduces the Risk of Heart Failure Related Hospitalization

The V-LAP system is tracking trends of left atrial pressure (LAP) readings with the V-LAP Implant. Left Atrial Pressure is the earliest and most specific indication for heart failure and allow your physician to detect heart failure decompensation before the onset of symptoms. When your physician will note an increased heart's pressure, he/she will contact you immediately and guide you how to change your medications.



## How Does the V-LAP System Work?

- After the procedure you will be required to wear a wearable V-LAP Belt twice each day. The process is initiated at the press of a button and takes only 1-2 minutes to perform.
- Every time you take a reading, it is transmitted to a secure website that your medical team can access.
- Your physician or nurse will review the information regularly and if the pressure increases, he or she will contact you and guide you how to change your medications or treatment plan. If everything is going well, you most likely will not hear from the medical team.
- Pacemakers, Implantable Cardioverter Defibrillators (ICDs), Cardiac Resynchronization Therapies (CRTs) and Ventricular Assist Devices (VADs) can work in conjunction with the V-LAP sensor and will not affect the performance of the system.
- If you decide not to continue, or cannot continue, transmitting data, you can stop. However, the sensor will remain in your heart with no risk to you.

