

Instructions for putting on Personal Protective Equipment („Donning“)

In dealing with patients with suspected or confirmed COVID-19

Components of the protective equipment

(Generic photo showing just one possible configuration)



- Hand disinfectant
- Liquid sealing protective gown
- FFP2-mask
- Eye protection
(Face mask with visor or goggles)
- Gloves

Preparation



- Take off jewelry and wrist watch
- Fasten hair
- A beard lowers the protection offered by the mask
- Hydrate sufficiently
- Whenever possible: get help from a trained observer („buddy“)

Hygienic hand disinfection

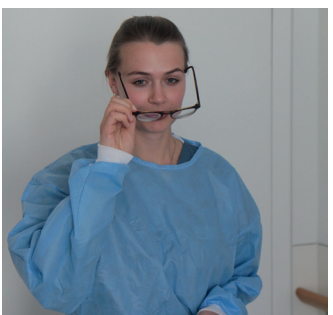


Putting on the protective gown



- Inner straps stay open
- Closing the gown with external help: Collar velcro strap
- Fasten the back strap laterally

If you are wearing glasses



Take your glasses off

Putting on the FFP2-Mask



Correct position of the straps: upper strap above the ears, lower strap in the neck

Adjust the nasal clip with both indexes

Check and adjust (if necessary) the tight seal of the mask

- Mask with a valve: Take a deep breath
The seal is tight if the mask gets sucked onto the face
- Masks without a valve: rapid exhalation
The seal is tight if you can't feel any air escaping at the mask's edges

Putting on the eye protection

If you are wearing glasses: Put them on again
Visor or protective goggles should cover your glasses



- Visor covering upper part of the face, mask below chin



- Alternative: use protective goggles

Putting on the single-use gloves



The gloves have to cover the wrist and the wristband of the gown

Last Check



Check for correct fit of the protective equipment



Whenever possible: check by a trained observer („buddy“)

No further manipulation of protective equipment

Enter patient room / treatment area



Immediate measures in the case of unintended damage to the protective equipment

- Ensure the safety of the patient
- Take off the protective equipment up to the mask according to protocol
- Leave the patient room / treatment area
- Hygienic hand disinfection
- Take off the face mask
- Hygienic hand disinfection
- Put on new protective equipment

Instruction videos and further information can be found here:

